



INTELLI-SITE HMI and Access Control Software

OSSI is the industry leader in providing intuitive, user friendly, Command and Control Solutions. Our Intelli-Site software offers multiple views to monitor status, health and wellness of your control system. Pop-up screens for each Smart PLC or controller allow the operator to enable, disable, and activate any point in the system. Legends on each hardware control screen provide the operator easy reference explaining device statuses. The system is modular in design to minimize cost while not limiting scalability. Intelli-Site: Designed to make your security an Intelligent Site.

KEY FEATURES

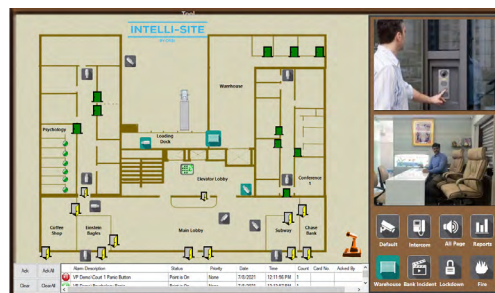
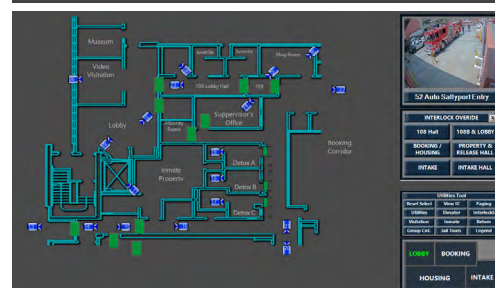
- Live View provides real time interactive graphics to control, doors, live video, intercom, and more. Screens are completely customizable. Your floorplans, colors, icon style etc.
- Supports integration to the leading PLC's over 25000 VMS or camera live streams, many of the leading VMS solutions, Intercom, Intrusion, Perimeter fence, patient wandering and more.
- Event queues in one click take you to the building, call up the live video, connect the intercom so you can see and hear the event as it unfolds. This provides greater situational awareness of your complete command and control system.
- Easy to program interactive graphics with dropdown command menu.
- Hardware Management View is a graphical representation of system health and configuration notifications.
- Access Management View makes it easy to configure holidays, time zones, Access Assignments and User Information.
- Activity View gives the user multiple real-time activity logs that can be filter transactions down as granular as an individual access control panel.
- Scheduled Events View provides easy administration of special access control activities.
- Reports View provides quick reference to card records, department, cardholder activity, card changes, and system information.
- Easy to configure elevator control.
- Intelli-Site has Safeguards in place to reduce administrative errors.
- Scalable to unlimited readers, unlimited cards, unlimited users, and unlimited cameras.

SYSTEM REQUIREMENTS

Operating System	Windows 11 (Pro or Enterprise), Windows Server Windows Server 2016, 2019, or 2022
CPU (Processor)	Minimum: Intel I5 2.0 GHz Recommended: Intel I7 Quad Core 2.8 GHz
RAM (Memory)	Minimum: 16GB DDR2 800 MHz Recommended: 32GB DDR4 SDRAM
HDD (Disk Space)	Minimum: 200GB Recommended: 1TB
VGA (Video)	Minimum: 1GB VRAM @ 1024x768, (32-bit color) Recommended: 4GB VRAM DDR3 @ 700MHz or higher
Display:	24" VGA (Touch screen optional)
Input Devices	Mouse, keyboard
Network & Protocols	10/100/1000 network adapter with Windows TCP/IP

A Windows compatible sound device or card is required on the Client systems so that alerts and other sounds may be heard.

Live View



Access Management View

Card Data	Cardholder Data
Cardholder Image	First Name: Rick
	Middle: A
	Last Name: Hauser
	Title: Sales Manager
	Company: OSSI
	Department: Sales
Card Number: 1000	Phone: 262522188 Ext: 1881
Emboss No:	Email: rhauser@ossi-usa.com
Site Code: 90	Address: 10125 S 52nd Street
Card Format: 26 bit Standard	City: Franklin
PIN Number:	State: WI Zip Code: 52132
Days to Log: 0	
Card Type: Normal	Activation
Elevator Group: None	Activate: 17 March 2016
Long Access: <input type="checkbox"/> AFB Exempt: <input type="checkbox"/>	Expires: 17 March 2036
<input type="button" value="Add"/> <input type="button" value="Edit"/> <input type="button" value="Delete"/> <input type="button" value="Search"/> <input type="button" value="Save"/> <input type="button" value="Cancel"/> <input type="button" value="Download"/> <input type="button" value="Add Card Range"/>	
<input type="button" value="Import Cards"/> <input type="button" value="Bulk Modify Selected Records"/> <input type="checkbox"/> Download when saved	

Pop-Up Control Screen

